

DEPARTMENT OF THE ARMY TECHNICAL MANUAL

**DIRECT SUPPORT AND GENERAL SUPPORT MAINTENANCE
REPAIR PARTS AND SPECIAL TOOLS LISTS (INCLUDING
DEPOT MAINTENANCE REPAIR PARTS AND SPECIAL TOOLS)
TEST SET, RELAY TS-1194A/U
FSN 6625-752-8633**

Headquarters, Department of the Army, Washington, D.C.
29 June 1973

Current as of December 1972

		Paragraph	Page
Section I.	INTRODUCTION		
	Scope	1-1	2
	General	1-2	2
	Explanation of columns	1-3	2
	Special information	1-1	4
	Location of repair parts	1-5	4
	Abbreviations (Not applicable)	1-6	4
	Reporting of equipment publication improvements	1-7	4
II.	REPAIR PARTS LIST		6
III.	SPECIAL TOOLS, TEST AND SUPPORT EQUIPMENT (Not applicable)		
IV.	INDEX-FEDERAL STOCK NUMBER AND REFERENCE NUMBER CROSS-REFERENCE NUMBER CROSS-REFERENCE TO FIGURE AND ITEM NUMBER		20

*This manual, together with TM11-6625-362-20P, 29 June 1973, supersedes TM 11-6625-362-25P, 2 June 1966

SECTION I

INTRODUCTION

1-1. Scope

This manual lists repair parts and special tools required for the performance of direct support, general support, and depot maintenance of the TS-1194A/U. The PCCN for the TS-1194A/U is GCWAEM for all models.

1-2. General

This repair parts and special tools list is divided into the following sections:

a. Repair Parts List - Section II. A list of repair parts authorized for the performance of maintenance at the direct support, general support, and depot level. This repair parts list is arranged in alphabetical order.

b. Special Tools. Test and Support Equipment - *Section III. Not applicable.*

c. *Index — Federal Stock Number and Reference Number Cross-Reference to Figure and Item Number — Section IV.* A list, in ascending numerical sequence, of all Federal stock numbers appearing in the listings, followed by a list, in alphabetic sequence, of all reference numbers appearing in the listings. Federal stock number and reference numbers are cross-referenced to each illustration figure and item number or reference designation appearance.

1-3. Explanation of columns

The following provides an explanation of columns found in the tabular list.

a. Source, Maintenance, and Recoverability Codes (SMR).

(1) Source Code. Indicates the manner of acquiring support items for maintenance, repair, or overhaul of end items. Source codes are -

Code	Explanation
PA	- Item procured and stocked for anticipated or known usage.
PB	- Item procured and stocked for insurance purposes because essentiality dictates that a minimum quantity be available in the supply systems.
PC	- Item procured and stocked and which otherwise would be coded PA except that it is deteriorative in nature.
PD	- Support item, excluding support equipment, procured for initial issue or outfitting and stocked only for subsequent or additional initial issues or outfittings. Not subject to automatic replenishment.

Code	Explanation
PE	-- Support equipment procured and stocked for initial issue or outfitting to specified maintenance repair activities.
PF	- Support equipment which will not be stocked but which will be centrally procured on demand.
PG	- Item procured and stocked to provide for sustained support for the life of the equipment. It is applied to an item peculiar to the equipment which because of probable discontinuance or shutdown of production facilities would prove uneconomical to reproduce at a later time.
KD	-An item of depot overhaul/repair kit and not purchased separately. Depot kit defined as a kit that provides items required at the time of overhaul or repair.
KF	- An item of a maintenance kit and not purchased separately. Maintenance kit defined as a kit that provides an item that can be replaced at organizational or direct support or general support levels of maintenance.
KB	-- Item included in both a depot overhaul/repair kit and a maintenance kit.
MO	-Item to be manufactured or fabricated at organizational level.
MF	- Item to be manufactured or fabricated at direct support maintenance level.
MH	-Item to be manufactured or fabricated at general support maintenance level.
MD	-Item to be manufactured or fabricated at depot maintenance level.
AO	- Item to be assembled at organizational level.
AF	- Item to be assembled at direct support maintenance level.
AH	- Item to be assembled at general support maintenance level.
AD	-Item to be assembled at depot maintenance level.
XA	- Item is not procured or stocked because the requirements for the item will result in the replacement of the next higher assembly.
XB	- Item is not procured or stocked. If not available through salvage, requisition.
XC	- Installation drawing, diagram instruction sheet, field service drawing, that is identified by manufacturers' part number.
XD	- Support items can be requisitioned with justification.

NOTE

Cannibalization or salvage may be used as a source of supply for any items source coded above except those coded XA and aircraft support items as restricted by AR 700-42.

(2) **Maintenance code.** Maintenance codes are assigned to indicate the levels of maintenance authorized to USE and REPAIR support items. The maintenance codes are entered in the third and fourth positions of the Uniform SMR Code Format as follows -

(a) Use (third position). The maintenance code entered in the third position indicates the lowest maintenance level authorized to remove, replace, and use the support item. The maintenance code entered in the third position indicates one of the following levels of maintenance.

Code	Application/Explanation
O -	Support item is removed, replaced, used at the organizational level of maintenance.

NOTE

A code "C" may be used in this position to denote crew or operator maintenance performed within organizational maintenance.

F -	Support item is removed, replaced, used at the direct support maintenance level.
H -	Support item is removed, replaced, used at the general support maintenance.
D -	Support items that are removed, replaced, used at depot only.

(b) Repair (fourth position). The maintenance code entered in the fourth position indicates whether the item is to be repaired and identifies the lowest maintenance level with the capability to perform complete repair (i.e., all authorized maintenance functions). When a maintenance code is not used a dash (-) sign is entered. For multiservice equipment/systems or when a code is entered, this position will contain one of the following maintenance codes as assigned by the service(s) that require the code-

Code	Application/Explanation
o -	The lowest maintenance level capable of complete repair of the support item is the organizational level.
F -	The lowest maintenance level capable of complete repair of the support item is direct support.
H -	The lowest maintenance level capable of complete repair of the support item is general support.

Code	Application/Explanation
D - -	The lowest maintenance level capable of complete repair of the support item is the depot level.
L -	Repair restricted to designated Specialized Repair Activity.
Z -	Non-repairable. No repair is authorized.
B -	No repair is authorized. The item may be reconditioned by adjusting, lubricating, etc., at the user level. No parts or special tools are procured for the maintenance of this item.

(3) **Recoverability code.** Recoverability codes are assigned to support items to indicate the disposition action on unserviceable items. The recoverability code is entered in the fifth position of the uniform SMR Code Format as follows-

Code	Explanation
Z -	Nonrepairable item. When unserviceable, condemn and dispose at the level indicated in the first digit of the maintenance code.
O -	Repairable item. When uneconomically repairable condemn and dispose at organizational level.
F -	Repairable item. When uneconomically repairable, condemn and dispose at the direct support level.
H -	Repairable item. When uneconomically repairable, condemn and dispose at the general support level.
D -	Repairable item. When beyond lower level repair capability, return to depot. Condemnation and disposal not authorized below depot level.
L -	Repairable item. Repair, condemnation, and disposal not authorized below depot/Specialized Repair Activity level.
A -	Item requires special handling or condemnation procedures because of specific reasons (i.e., precious metal content, high dollar value, critical material or hazardous material).

b. Federal Stock Number. indicates the Federal stock number assigned to the item and will be used for requisitioning purposes.

c. Description. Indicates the Federal item name and a minimum description required to identify the item. The last line indicates the reference number followed by the applicable Federal Supply Code for Manufacturer (FSCM) in parentheses. The FSCM is used as an element in item identification to designate manufacturer or distributor or Government agency, etc., and is identified in SB 708-42.

d. Unit of Measure (U/M). Indicates the standard

or basic quantity by which the listed item is used in performing the actual maintenance function. This measure is expressed by a two-character alphabetical abbreviation; e.g., ea. in, pr, etc., and is the basis used to indicate quantities and allowances in subsequent columns. When the unit of measure differs from the unit of issue, the lowest unit of issue that will satisfy the required units of measure will be requisitioned.

e. Quantity Incorporated in Unit. This column indicates the quantity of the item used in the equipment. Subsequent appearances of the same item in the same assembly are indicated by the letters "REF".

f. 30-Day DS/GS Maintenance Allowances.

NOTE

Allowances in GS column are for GS maintenance only.

(1) The repair parts indicated by asterisk entries in separate allowance columns for DS and GS represent those authorized for use at that category of maintenance to be requisitioned on an "as required" basis, until stockage is based on demand in accordance with AR 710-2.

(2) Allowance quantities are indicated in the special tool lists section for special tools, TMDE, and other support equipment.

g. 1-Year Allowances Per 100 Equipments Contingency Planning Purposes. Column intentionally left blank.

h. Depot Maintenance Allowance Per 100 Equipments. This column indicates opposite the first appearance of each item the total quantity authorized for depot maintenance of 100 equipments.

i. Illustration. This column is divided as follows:

(1) Figure number. Indicates the figure number of the illustration on which the item is shown in TM 11-6625-362-12 and/or TM 11-6625-362-35.

(2) Item number. Indicates the item number or reference designation used to reference the item in the illustration.

1-4. Special Information

a. Usable on codes are included in column 3. Uncoded items are applicable to all models. Identification of the usable on codes used in this publication are -

Code	Used on
AQY	TS-1194A/U

b. The following publications pertain to the TS-1194A/U and its components:

TM 11-6625-362-12	Organizational Maintenance Manual: Test Set, Relay TS-1194A/U.
-------------------	--

TM 11-6625-362-20P Organizational Maintenance Repair Parts and Special Tools Lists: Test Set, Relay TS-1194A/U

TM 11-6625-362-35 Field and Depot Maintenance Manual: Test Set, Relay TS-1194A/U.

1-5. Location of Repair Parts

a. This manual contains one cross-reference index (sec IV) to be used to locate a repair part when either the Federal stock number or reference number (manufacturer's part number) is known. The first column in the index is prepared in numerical or alphanumeric sequence in ascending order. The reference numbers (manufacturer's part numbers) are listed immediately following the last listed Federal stock number in the index of Federal stock numbers.

b. When the Federal stock number or reference number is known, follow the procedures given in (1) and (2) below.

(1) Refer to the index of Federal stock numbers (sec IV) and locate the Federal stock number or reference number. The FSN and reference number are cross-referenced to the applicable figure and item number or reference designation.

(2) Refer to the repair parts list (sec II) and locate the figure number (col 10a) and item number or reference designation (col 10b) as noted in the FSN index.

c. When the figure and item number or reference designation are known, scrutinize columns 10a and 10b of the repair parts list (sec II) until the item is located.

d. When the FSN, reference number, figure number, item number and reference designation are not known, scrutinize column 3 of the repair parts list (sec II), which is arranged in alphabetical order.

1-6. Abbreviations

Not applicable.

1-7. Reporting of Equipment Publication Improvements

The reporting of errors, omissions, and recommendations for improving this publication by the individual user is encouraged. Reports should be submitted on DA Form 2028 (Recommended Changes to Publications) and forwarded direct to Commander, US Army Electronics Command. ATTN: AMSEL-MA-CW, Fort Monmouth, N.J., 07703.

(Next page is 6.)

SECTION II

TM11-6625-362-34P

(1) SMR CODE	(2) FEDERAL STOCK NUMBER	(3) DESCRIPTION REFERENCE NUMBER & MFR. CODE USABLE ON CODE		(4) UNIT OF MEAS	(5) QTY INC IN UNIT	(6) 30-DAY DS MAINT ALLOWANCE			(7) 30-DAY GS MAINT ALLOWANCE			(8) 1-YR ALW PER 100 EQUIP CNTGCT	(9) DEPOT MAINT ALW PER 100 EQUIP	(10) ILLUSTRATION	
						(a)	(b)	(c)	(a)	(b)	(c)			(a)	(b)
						1-20	21-50	51-100	1-20	21-50	51-100			FIGURE NO.	ITEM NO.
PAHZZ	5910-709-3064	CAPACITOR, FIXED, ELECTROLYTIC C1..... USED IN AQV-1 2 SECT 50 UF AND 30 UF 350 VDCW 2-1/2 IN LG X 1-3/8 IN DIA (P5325 (14655))		EA	1				*	*	*		3	9	C1
PAHZZ	5910-086-6946	CAPACITOR, FIXED, ELECTROLYTIC C1..... USED IN AQV-2 2 SECT 50 UF 1ST SECT 30 UF 2ND SECT 350 VDCW 2-1/2 IN LG X 1-3/8 IN DIA PNAFH2-40 (00656)		EA	1					*	*		3	9	C1
PAHZZ	5910-667-5230	CAPACITOR, FIXED, PAPER DIELECTRIC C2. USED IN AQV-1 5000 UUF PORM 20PCT 200 VDCW 9/16 IN LG X 0.197 IN DIA P123ZP (00656)		EA	1				*	*	*		3	9	C2
PAHZZ	5910-721-1782	CAPACITOR, FIXED, ELECTROLYTIC C3..... USED IN AQV-1 97 TO 107 UF ETB100 (14655)		EA	1				*	*	*		3	9	C3
PAHZZ	5910-084-7744	CAPACITOR, FIXED, ELECTROLYTIC C3..... USED IN AQV-2 100 UF 25PCT, 300 VDCW 3.375 IN LG X 1.813 IN DIA NP3014A (37942)		EA	1				*	*	*		3	9	C3
PAHZZ	5910-816-1853	CAPACITOR, FIXED, PLASTIC DIELECTRIC C4 USED IN AQV-1 AND AQV-2 50000 UUF 200 VDCW 1-1/4 IN LG X 3/8 IN DIA PM255 (14655)		EA	1				*	*	*		3	8	C4
PACZZ	6240-155-8706	LAMP, INCANDESCENT DS1 NOTES #1. USED IN AQV 1 AND AQV-2 6 TO 8 V 0.15 AMP MS15571-2 (96906)		EA	3	*	*	*	*	*	*		50	11	DS1
PACZZ	6240-155-8706	LAMP, INCANDESCENT DS3 NOTES #1. USED IN AQV-1 AND AQV-2 6 TO 8 V 0.15 AMP MS15571-2 (96906)		EA	REF	*	*	*	*	*	*			11	DS3
PACZZ	6240-155-8706	LAMP, INCANDESCENT DS4 NOTES #1. USED IN AQV-1 AND AQV-2 6 TO 8 V 0.15 AMP MS15571-2 (96906)		EA	REF	*	*	*	*	*	*			11	DS4
PACZZ	6240-223-9100	LAMP, GLOW DS2 NOTES #1. USED IN AQV- 1 AND AQV-2 6 TO 8 V 0.15 AMP NE51 (82047)		EA	1	*	*	*	*	*	*		3	11	DS2
PAHZZ	5940-577-3696	POST, BINDING E1 USED IN AQV-1..... PLASTIC 29-1R (81073)		EA	2				*	*	*		3	8	E1
PAHZZ	5940-577-3696	POST, BINDING E3 USED IN AQV-1..... PLASTIC 29-1R (81073)		EA	REF				*	*	*			8	E3
PAHZZ	5940-577-3695	POST BINDING E2 USED IN AQV-1..... PLASTIC 1.103 IN H O/A ABOVE MTG SURFACE 29-1B (81073)		EA	2				*	*	*		3	8	E2
PAHZZ	5943-577-3695	POST BINDING E4 USED IN AQV-1..... PLASTIC 1.103 IN H O/A ABOVE MTG SURFACE 29-1B (81073)		EA	REF				*	*	*			8	E4
PACZZ	5920-280-8342	FUSE, CARTRIDGE F1 USED IN AQV-1 AND AQV-2 F02A250VA (81349)		EA	1	*	*	*	*	*	*		50	24	F1
PAHZZ	5935-258-1021	CONNECTOR, RECEPTACLE, ELECTRICAL J1.. CONTINUED		EA	2				*	*	*		3	10	J1

SECTION II

TM11-6625-362-34P

(1) SMR CODE	(2) FEDERAL STOCK NUMBER	(3) DESCRIPTION REFERENCE NUMBER & MFR. CODE USABLE ON CODE	(4) UNIT OF MEAS	(5) QTY IHC IN UNIT	(6) 30-DAY DS MAINT ALLOWANCE			(7) 30-DAY GS MAINT ALLOWANCE			(8) 1-YR ALW PER 100 EQUIP CNTGCT	(9) DEPOT MAINT ALW PER 100 EQUIP	(10) ILLUSTRATION	
					(a)	(b)	(c)	(a)	(b)	(c)			(a)	(b)
					1-20	21-50	51-100	1-20	21-50	51-100			FIGURE NO.	ITEM NO.
PAHZZ	5940-577-3696	CONTINUED POST, BINDING E1 USED IN AQV-1..... 7466 (74545)	EA	2				*	*	*		3	8	E1
PAHZZ	5935-258-1021	CONNECTOR, RECEPTACLE, ELECTRICAL J2.. USED IN AQV-1 7466 (74545)	EA	REF				*	*	*			9	J2
PAHZZ	5935-615-2420	CONNECTOR, RECEPTACLE, ELECTRICAL J1.. USED IN AQV-2 STRAIGHT SHAPE 3 CONT IN IN LG X 2.062 IN W X 1.218 IN H 7486G (74545)	EA	2				*	*	*		3	10	J1
PAHZZ	5935-615-2420	CONNECTOR, RECEPTACLE, ELECTRICAL J2.. USED IN AQV-2 STRAIGHT SHAPE 3 CONT IN IN LG X 2.062 IN W X 1.218 IN H 7486G (74545)	EA	REF				*	*	*			9	J2
PAHZZ	5935-260-0517	SOCKET, ELECTRON TUBE J3 USED IN AQV- 1 AND AOV-2 TS101P01 (81349)	EA	2				*	*	*		3	8	J3
PAHZZ	5935-260-0517	SOCKET, ELECTRON TUBE J4 USED IN AQV- 1 AND AOV-2 TS101P01 (81349)	EA	REF				*	*	*			23	J4
PAHZZ	5935-061-8211	SOCKET, RELAY J5 USED IN AOV-1 AND... AQV-2 8 CONT 1-1/2 IN H X 2 IN W X 1-1/2 IN LG 18 (64959)	EA	1				*	*	*		3	23	J5
PAHZZ	6625-038-4928	AMMETER USED IN AOV-1 M1 PANEL TYPE.. 0T05CW, 0T0CW RANGES ON 2 SINGLE SCALE 50 LINEAR DIV 1.040D TO MTG FLANGE X3 IN LG FLANGE X3.120 IN W OFFLANGE X2.750 IN DIA OF BDY A57 (78277)	EA	1				*	*	*		3	8	M1
PAHZZ	6625-061-8120	AMMETER M1 USED INIAOV-2 PANEL TYPE.. 0T05CW 50 L2NEAR DIV 3 IN W X3.125 IN H METER FLANGE 2.75 IN DIA BODY 35L5MAAC (01914)	EA	1				*	*	*		3	8	M1
PAHZZ	6625-838-4929	AMMETER M2 USED IN AOV-1 PANLTYPE ... 2.5T00T02.5CW LINR, 50 DIV 1.040IN TO MTG FLANGE, 3IN LG FLANGE X 3.120IN W OF FLANGE, 2.750IN DIA OF BODY A58 (78277)	EA	1				*	*	*		3	8	M2
PAHZZ	6625-889-1568	AMMETER M2 USED IN AOV-2 PANLTYPE ... 1T00T01CW 50 LINR DIV 3IN W X 3.125IN H MTG FLANGE 2.75 DIA METER BODY 35L500-0-500UADC (01914)	EA	1				*	*	*		3	8	M2
PAHZZ	5935-636-7145	CONNECTOR, PLUG, ELECTRICAL P1 USED.. IN AOV-1 AND AOV-2 TYPE MS91185-1 C3767 (81349)	EA	1				*	*	*		3	24	P1
PAHZZ	5935-256-9000	CONNECTOR, PLUG, ELECTRICAL P2 USED.. IN AOV-1 7464 (74545)	EA	2				*	*	*		3	24	P2
PAHZZ	5935-258-9000	CONNECTOR, PLUG, ELECTRICAL P3 USED.. IN AOV-1 7464 (74545)	EA	REF				*	*	*			10	P3

SECTION II

TM11-6625-362-34P

(1) SMR CODE	(2) FEDERAL STOCK NUMBER	(3) DESCRIPTION REFERENCE NUMBER & MFR. CODE USABLE ON CODE		(4) UNIT OF MEAS	(5) QTY INC IN UNIT	(6) 30-DAY DS MAINT ALLOWANCE			(7) 30-DAY GS MAINT ALLOWANCE			(8) 1-YR ALW PER 100 EQUIP CNTCCY	(9) DEPOT MAINT ALW PER 100 EQUIP	(10) ILLUSTRATION	
						(a)	(b)	(c)	(a)	(b)	(c)			(a)	(b)
						1-20	21-50	51-100	1-20	21-50	51-100			FIGURE NO.	ITEM NO.
PAHZZ	5935-187-0727	CONNECTOR, PLUG, ELECTRICAL IN AQV-2 STRAIGHT SHAPE, 1.250IN LG X 1.156 DIA 7484 (74545)	P2 USED..	EA	2				*	*	*		3	24	P2
PAHZZ	5935-187-0727	CONNECTOR, PLUG, ELECTRICAL IN AQV-2 STRAIGHT SHAPE, 1.250IN LG X 1.156 DIA 7484 (74545)	P3 USED..	EA	REF				*	*	*			10	P3
PAHZZ	5935-243-6771	CONNECTOR, PLUG, ELECTRICAL IN AQV-1 86CP8 (02660)	P4 USED..	EA	1				*	*	*		3	24	P4
PAHZZ	5905-636-8609	RESISTOR, FIXED, WIREWOUND AQV-1 2500 OHM 14 W RW31V252 (81349)	R1 USED IN	EA	2				*	*	*		3	9	R1
PAHZZ	5905-636-8609	RESISTOR, FIXED, WIREWOUND AQV-1 2500 OHM 14 W RW31V252 (81349)	R2 USED IN	EA	REF				*	*	*			9	R2
PAHZZ	5905-270-5815	RESISTOR, FIXED, WIREWOUND AQV-2 1500 OHM PORM 5PCT 7 W RW55G252 (81349)	R1 USED IN	EA	2				*	*	*		3	9	R1
PAHZZ	5905-270-5815	RESISTOR, FIXED, WIREWOUND AQV-2 1500 OHM PORM 5PCT 7 W RW55G252 (81349)	R2 USED IN	EA	REF				*	*	*			9	R2
PAHZZ	5905-257-0937	RESISTOR, FIXED, COMPOSITION IN AQV-1 4700 OHM PORM 5PCT 2 W RC42GF472J (81349)	R3 USED.	EA	1				*	*	*		3	9	R3
PAHZZ	5905-279-4302	RESISTOR, FIXED, COMPOSITION IN AQV-1 270000 OHM PORM 5PCT 1 W RC32GF274J (81349)	R4 USED.	EA	2				*	*	*		3	9	R4
PAHZZ	5905-279-4302	RESISTOR, FIXED, COMPOSITION IN AQV-1 270000 OHM PORM 5PCT 1 W RC32GF274J (81349)	R5 USED.	EA	REF				*	*	*			9	R5
PAHZZ	5905-279-4302	RESISTOR, FIXED, COMPOSITION IN AQV-2 RC32GF274J (81349)	R8 USED.	EA	3				*	*	*		3	9	R8
PAHZZ	5905-279-4302	RESISTOR, FIXED, COMPOSITION IN AQV-2 RC32GF274J (81349)	R10 USED.	EA	1				*	*	*			8	R10
PAHZZ	5905-279-4302	RESISTOR, FIXED, COMPOSITION IN AQV-2 RC32GF274J (81349)	R11 USED.	EA	REF				*	*	*			9	R11
PAHZZ	5905-190-8873	RESISTOR, FIXED, COMPOSITION IN AQV-2 47000 OHMS PORM 10PCT, 2 W RC42GF473J (81349)	R4 USED.	EA	1				*	*	*		3	9	R4
PAHZZ	5905-279-2543	RESISTOR, FIXED, COMPOSITION IN AQV-1 36000 OHM PORM 5PCT 1 W RC32GF363J (81349)	R6 USED.	EA	1				*	*	*		3	9	R6
PAHZZ	5905-279-2543	RESISTOR, FIXED, COMPOSITION IN AQV-2 RC32GF363J (81349)	R3 USED.	EA	1				*	*	*		3	9	R3
PAHZZ	5905-253-1233	RESISTOR, FIXED, COMPOSITION IN AQV-1 560 OHM PORM 5PCT 2 W RC42GF561J (81349)	R7 USED.	EA	1				*	*	*		3	9	R7

SECTION II

TM11-6625-362-34P

(1) SMR CODE	(2) FEDERAL STOCK NUMBER	(3) DESCRIPTION REFERENCE NUMBER & MFR. CODE USABLE ON CODE		(4) UNIT OF MEAS	(5) QTY INC IN UNIT	(6) 30-DAY DS MAINT ALLOWANCE			(7) 30-DAY GS MAINT ALLOWANCE			(8) 1-YR ALW PER 100 EQUIP CNTGCV	(9) DEPOT MAINT ALW PER 100 EQUIP	(10) ILLUSTRATION	
						(a)	(b)	(c)	(a)	(b)	(c)			(a)	(b)
						1-20	21-50	51-100	1-20	21-50	51-100			FIGURE NO.	ITEM NO.
PAHZZ	5905-253-1233	RESISTOR, FIXED, COMPOSITION IN AOV-2 560 OHM PORM 5PCT 2 W RC42GF561J (81349)	R6 USED.	EA	1				*	*	*		3	9	R6
PAHZZ	5905-299-2013	RESISTOR, FIXED, COMPOSITION IN AOV-1 47000 OHM PORM 5PCT 1 W RC32GF473J (81349)	R8 USED.	EA	1				*	*	*		3	9	R8
PAHZZ	5905-299-2013	RESISTOR, FIXED, COMPOSITION IN AOV-2 RC32GF473J (81349)	R22 USED.	EA	1				*	*	*		3	8	R22
PAHZZ	5905-279-1722	RESISTOR, FIXED, COMPOSITION IN AOV-1 1000 OHM PORM 10PCT 1 W RC32GF102K (81349)	R9 USED.	EA	3				*	*	*		3	9	R9
PAHZZ	5905-279-1722	RESISTOR, FIXED, COMPOSITION IN AOV-1 1000 OHM PORM 10PCT 1 W RC32GF102K (81349)	R11 USED.	EA	REF				*	*	*			9	R11
PAHZZ	5905-279-1722	RESISTOR, FIXED, COMPOSITION IN AOV-1 1000 OHM PORM 10PCT 1 W RC32GF102K (81349)	R34 USED.	EA	REF				*	*	*			8	R34
PAHZZ	5905-279-1722	RESISTOR, FIXED, COMPOSITION IN AOV-2 RC32GF102K (81349)	R25 USED.	EA	3				*	*	*		3	8	R25
PAHZZ	5905-279-1722	RESISTOR, FIXED, COMPOSITION IN AOV-2 RC32GF102K (81349)	R27 USED.	EA	REF				*	*	*			8	R27
PAHZZ	5905-279-1722	RESISTOR, FIXED, COMPOSITION IN AOV-2 RC32GF102K (81349)	R35 USED.	EA	REF				*	*	*			8	R35
PAHZZ	5905-061-7282	RESISTOR, FIXED, FILM 2 66.7 OHM PORM 1PCT 1/2 W RN70B66R7F (81349)	R9 USED IN AOV-	EA	1				*	*	*		3	9	R9
PAHZZ	5905-258-7070	RESISTOR, VARIABLE 5000 OHM PORM 10PCT 2 W CU5021 (44655)	R10 USED IN AOV-1..	EA	1				*	*	*		3	8	R10
PAHZZ	5905-258-7070	RESISTOR, VARIABLE CU5021 (44655)	R17 USED IN AOV-2..	EA	2				*	*	*		3	8	R17
PAHZZ	5905-258-7070	RESISTOR, VARIABLE CU5021 (44655)	R26 USED IN AOV-2..	EA	REF				*	*	*			8	R26
PAHZZ	5905-299-2030	RESISTOR, FIXED, COMPOSITION IN AOV-1 12000 OHM PORM 5PCT 1 W RC32GF123J (81349)	R12 USED.	EA	2				*	*	*		3	9	R12
PAHZZ	5905-299-2030	RESISTOR, FIXED, COMPOSITION IN AOV-1 12000 OHM PORM 5PCT 1 W RC32GF123J (81349)	R20 USED.	EA	REF				*	*	*			9	R20
PAHZZ	5935-299-2030	RESISTOR, FIXED, COMPOSITION IN AOV-2 RC32GF123J (81349)	R20 USED.	EA	2				*	*	*		3	9	R20
PAHZZ	5905-299-2030	RESISTOR, FIXED, COMPOSITION IN AOV-2 RC32GF123J (81349)	R29 USED.	EA	REF				*	*	*			9	R29
PAHZZ	5905-061-8161	RESISTOR, VARIABLE 3000 OHM PORM 10PCT 2 W 430-30K (12697)	R12 USED IN AOV-2..	EA	1				*	*	*		3	9	R12

SECTION II

TM11-6625-362-34P

(1) SMR CODE	(2) FEDERAL STOCK NUMBER	(3) DESCRIPTION REFERENCE NUMBER & MFR. CODE USABLE ON CODE		(4) UNIT OF MEAS	(5) QTY INC IN UNIT	(6) 30-DAY DS MAINT ALLOWANCE			(7) 30-DAY GS MAINT ALLOWANCE			(8) 1-YR ALW PER 100 EQUIP CNTGCT	(9) DEPOT MAINT ALW PER 100 EQUIP	(10) ILLUSTRATION	
						(a)	(b)	(c)	(a)	(b)	(c)			(a)	(b)
						1-20	21-50	51-100	1-20	21-50	51-100			FIGURE NO.	ITEM NO.
PAHZZ	5905-256-0390	RESISTOR, FIXED, COMPOSITION IN AQV-1 680 OHMS PORM 5PCT 2 W RC42GF681J (81349)	R13 USED.	EA	2				*	*	*		3	9	R13
PAHZZ	5905-256-0390	RESISTOR, FIXED, COMPOSITION IN AQV-1 680 OHMS PORM 5PCT 2 W RC42GF681J (81349)	R29 USED.	EA	REF				*	*	*			9	R29
PAHZZ	5905-256-0390	RESISTOR, FIXED, COMPOSITION IN AQV-2 RC42GF681J (81349)	R13 USED.	EA	2				*	*	*		3	9	R13
PAHZZ	5905-256-0390	RESISTOR, FIXED, COMPOSITION IN AQV-2 RC42GF681J (81349)	R18 USED.	EA	REF				*	*	*			9	R18
PAHZZ	5905-552-5444	RESISTOR, FIXED, FILM 2 1000 OHM PORM 10PCT 1/2 W RN70S1001F (81349)	R14 USED IN AQV-	EA	1				*	*	*		3	8	R14
PAHZZ	5905-989-5564	RESISTOR, FIXED, FILM 1 27000 OHMS PORM 1PCT 1/2 W RN65D2702F (81349)	R14 USED IN AQV-	EA	1				*	*	*		3	8	R14
PAHZZ	5905-299-2044	RESISTOR, FIXED, COMPOSITION IN AQV-1 2200 OHM PORM 10PCT 1 W RC32GF222K (81349)	R15 USED.	EA	2				*	*	*		3	9	R15
PAHZZ	5905-299-2044	RESISTOR, FIXED, COMPOSITION IN AQV-1 2200 OHM PORM 10PCT 1 W RC32GF222K (81349)	R16 USED.	EA	REF				*	*	*			9	R16
PAHZZ	5905-299-2044	RESISTOR, FIXED, COMPOSITION IN AQV-2 RC32GF222K (81349)	R23 USED.	EA	2				*	*	*		3	8	R23
PAHZZ	5905-299-2044	RESISTOR, FIXED, COMPOSITION IN AQV-2 RC32GF222K (81349)	R24 USED.	EA	REF				*	*	*			8	R24
PAHZZ	5905-061-8166	RESISTOR, FIXED, FILM 2 3500 OHM PORM 1PCT 1/2 W 3/4IN LG X 1/4IN DIA, RN70B3501F (23237)	R15 USED IN AQV-	EA	2				*	*	*		3	9	R15
PAHZZ	5905-061-8166	RESISTOR, FIXED, FILM 2 3500 OHM PORM 1PCT 1/2 W 3/4IN LG X 1/4IN DIA, RN70B3501F (23237)	R16 USED IN AQV-	EA	REF				*	*	*			9	R16
PAHZZ	5905-816-2252	RESISTOR, VARIABLE 5000 OHM PORM 10PCT 2 W 1.125IN DIA X 0.594IN D 43 (12697)	R17 USED IN AQV-1..	EA	1				*	*	*		3	8	R17
PAHZZ	5905-926-0407	RESISTOR, FIXED, FILM 3500 OHMS PORM 1PCT 3/4 W RN70F3501D (81349)	R18 USED IN AQV-1..	EA	2				*	*	*		3	9	R18
PAHZZ	5905-926-0407	RESISTOR, FIXED, FILM 3500 OHMS PORM 1PCT 3/4 W RN70F3501D (81349)	R19 USED IN AQV-1..	EA	REF				*	*	*			9	R19
PAHZZ	5905-190-8865	RESISTOR, FIXED, COMPOSITION AQV-1 270000 OHM PORM 5PCT 1/2 W RC20GF274J (81349)	R21 USED IN.	EA	1				*	*	*		3	8	R21
PAHZZ	5905-993-8879	RESISTOR, FIXED, FILM CONTINUED	R21 USED IN AQV-2.	EA	1				*	*	*		3	8	R21

SECTION II

TM11-6625-362-34P

(1) SMR CODE	(2) FEDERAL STOCK NUMBER	(3) DESCRIPTION REFERENCE NUMBER & MFR. CODE USABLE ON CODE		(4) UNIT OF MEAS	(5) QTY INC IN UNIT	(6) 30-DAY DS MAINT ALLOWANCE			(7) 30-DAY GS MAINT ALLOWANCE			(8) 1-YR ALW PER 100 EQUIP CNTGCT	(9) DEPOT MAINT ALW PER 100 EQUIP	(10) ILLUSTRATION		
						(a)	(b)	(c)	(a)	(b)	(c)			(a)	(b)	
						1-20	21-50	51-100	1-20	21-50	51-100			FIGURE NO.	ITEM NO.	
		CONTINUED														
PAHZZ	5905-687-0482	1/4IN DIA, 1/4IN OD, RN70B2702F (75042)	R22	EA	1				*	*	*		3	8	R22	
		RESISTOR,VARIABLE 50000 OHM PORM 10PCT 2 W 1.125IN DIA X 0.593IN D, P37REVB (72277)	USED IN AQV-1...													
PAHZZ	5905-687-0323	RESISTOR,VARIABLE 30000 OHM PORM 5PCT 2 W 1.656IN DIA X 0.781IN D, P38REVC (72877)	R23	EA	1				*	*	*		3	8	R23	
		RESISTOR,FIXED,FILM 10000 OHM PORM 1PCT 11/16IN LG X 0.230IN DIA CP1-2 (00656)	USED IN AQV-1.													
PAHZZ	5905-259-2648	RESISTOR,FIXED,FILM 66.7 OHM PORM 1PCT 1/4 W RN60D66R7F (81349)	R24	EA	1				*	*	*		3	8	R24	
		RESISTOR,FIXED,FILM 50 OHM PORM 1PCT 1/4 W RN60D50R0F (81349)	USED IN AQV-1.													
PAHZZ	5905-926-0380	RESISTOR,FIXED,FILM 10.4 OHM PORM 1PCT 1/4 W RN60D10R4F (81349)	R25	EA	1				*	*	*		3	8	R25	
		RESISTOR,FIXED,COMPOSITION AQV-1 150 OHM PORM 5PCT 1/2 W RC20GF151J (81349)	USED IN AQV-1.													
PAHZZ	5905-926-0499	RESISTOR,FIXED,COMPOSITION AQV-2 RC20GF151J (81349)	R26	EA	1				*	*	*		3	8	R26	
		RESISTOR,VARIABLE 50000 OHM PORM 10PCT 2 W CU5031 (44655)	USED IN AQV-2...													
PAHZZ	5905-299-1541	RESISTOR,FIXED,COMPOSITION AQV-1 150 OHM PORM 5PCT 1/2 W RC20GF151J (81349)	R27	EA	1				*	*	*		3	8	R27	
		RESISTOR,FIXED,COMPOSITION AQV-2 RC20GF151J (81349)	USED IN AQV-2...													
PAHZZ	5905-299-1541	RESISTOR,FIXED,COMPOSITION AQV-1 62000 OHM PORM 5PCT 1/2 W RC20GF623J (81349)	R28	EA	1				*	*	*		3	8	R28	
		RESISTOR,FIXED,COMPOSITION AQV-2 RC20GF623J (81349)	USED IN AQV-2...													
PAHZZ	5905-201-2950	RESISTOR,FIXED,COMPOSITION AQV-1 5100 OHM PORM 5PCT 1/2 W RC20GF512J (81349)	R29	EA	1				*	*	*		3	8	R29	
		RESISTOR,FIXED,COMPOSITION AQV-2 RC20GF512J (81349)	USED IN AQV-2...													
PAHZZ	5905-249-3656	RESISTOR,FIXED,COMPOSITION AQV-1 62000 OHM PORM 5PCT 1/2 W RC20GF623J (81349)	R30	EA	1				*	*	*		3	8	R30	
		RESISTOR,FIXED,COMPOSITION AQV-2 RC20GF623J (81349)	USED IN AQV-2.													
PAHZZ	5905-249-3656	RESISTOR,FIXED,COMPOSITION AQV-1 5100 OHM PORM 5PCT 1/2 W RC20GF512J (81349)	R31	EA	1				*	*	*		3	8	R31	
		RESISTOR,FIXED,COMPOSITION AQV-2 RC20GF512J (81349)	USED IN AQV-2.													
PAHZZ	5905-061-7201	RESISTOR,FIXED,FILM 22.2 OHM PORM 1PCT 1/2 W RN70B22R2F (81349)	R32	EA	1				*	*	*		3	8	R32	
		RESISTOR,FIXED,COMPOSITION AQV-1 5100 OHM PORM 5PCT 1/2 W RC20GF512J (81349)	USED IN AQV-2.													
PAHZZ	5905-279-2019	RESISTOR,FIXED,COMPOSITION AQV-2 RC20GF512J (81349)	R5	EA	1				*	*	*		3	9	R5	
		RESISTOR,FIXED,FILM 133 OHM PORM 1PCT 1/2 W RN70C1330F (81349)	USED IN AQV-2.													
PAHZZ	5905-752-3352	RESISTOR,FIXED,FILM 133 OHM PORM 1PCT 1/2 W RN70C1330F (81349)	R31	EA	1				*	*	*		3	9	R31	

SECTION II

TM11-6625-362-34P

(1) SMR CODE	(2) FEDERAL STOCK NUMBER	(3) DESCRIPTION REFERENCE NUMBER & MFR. CODE USABLE ON CODE		(4) UNIT OF MEAS	(5) QTY INC IN UNIT	(6) 30-DAY DS MAINT ALLOWANCE			(7) 30-DAY GS MAINT ALLOWANCE			(8) 1-YR ALW PER 100 EQUIP CNTGCT	(9) DEPOT MAINT ALW PER 100 EQUIP	(10) ILLUSTRATION	
						(a)	(b)	(c)	(a)	(b)	(c)			(a)	(b)
						1-20	21-50	51-100	1-20	21-50	51-100			FIGURE NO.	ITEM NO.
PAHZZ	5905-190-8867	RESISTOR, FIXED, COMPOSITION AQV-1 5100 OHM PORM 5PCT 2 W RC42GF512J (81349)	R32 USED IN	EA	1				*	*	*		3	9	R32
PAHZZ	5905-190-8867	RESISTOR, FIXED, COMPOSITION AQV-2 RC42GF512J (81349)	R7 USED IN	EA	1				*	*	*		3	9	R7
PAHZZ	5905-542-9383	RESISTOR, FIXED, FILM 200 OHM PORM 1PCT 1/2 W RN70B2000F (81349)	USED IN AQV-2.	EA	1				*	*	*		3	9	R32
PAHZZ	5905-190-8876	RESISTOR, FIXED, COMPOSITION AQV-1 15000 OHM PORM 10PCT 1/2 W RC20GF153K (81349)	R33 USED IN	EA	1				*	*	*		3	8	R33
PAHZZ	5905-190-8876	RESISTOR, FIXED, COMPOSITION AQV-2 RC20GF153K (81349)	R34 USED IN	EA	1				*	*	*		3	8	R34
PAHZZ	5905-988-2314	RESISTOR, FIXED, FILM 200 OHM PORM 1PCT 1/4 W RN60D2000F (81349)	USED IN AQV-1.	EA	1				*	*	*		3	8	R35
PAHZZ	5930-721-0038	SWITCH, ROTARY SECT 8 POLE, 5 THROW NON PILE-UP TYPE 2-3/4IN LG X 1-7/8IN H X 1-5/8IN W 1431 (71590)	S1 USED IN AQV-1 4.....	EA	1				*	*	*		5	8	S1
PAHZZ	5930-655-1507	SWITCH, TOGGLE MS25100-22 (81349)	S1 USED IN AQV-2.....	EA	1				*	*	*		5	8	S1
PAHZZ	5930-709-3068	SWITCH, ROTARY NON PILE-UP TYPE, 2 POLES, 3 THROWS 0.812IN LG X 1.938IN H X 1.625IN W 1404 (71590)	S2 USED IN AQV-1 3 POS, NON PILE-UP TYPE, 2 POLES, 3 THROWS	EA	2				*	*	*		5	8	S2
PAHZZ	5930-709-3068	SWITCH, ROTARY NON PILE-UP TYPE, 2 POLES, 3 THROWS 0.812IN LG X 1.938IN H X 1.625IN W 1404 (71590)	S4 USED IN AQV-1 3 POS, NON PILE-UP TYPE, 2 POLES, 3 THROWS	EA	REF				*	*	*			8	S4
PAHZZ	5930-709-3068	SWITCH, ROTARY 1404 (71590)	S2 USED IN AQV-2.....	EA	1				*	*	*		5	8	S2
PAHZZ	5930-240-0273	SWITCH, LEVER AQV-2 1456 (71590)	S3 USED IN AQV-1 AND....	EA	1				*	*	*		5	8	S3
PAHZZ	5930-729-0930	SWITCH, ROTARY 2027 (71590)	S4 USED IN AQV-2.....	EA	1				*	*	*		5	8	S4
PAHZZ	5930-721-0037	SWITCH, ROTARY SECT 4 POLES, 4 THROWS 1-9/16IN LG X 1- 7/8IN H X 1-5/8IN W 1415 (71590)	S5 USED IN AQV-1 2.....	EA	1				*	*	*		5	8	S5
PAHZZ	5930-655-1575	SWITCH, TOGGLE MS35059-22 (96906)	S6 USED IN AQV-1 DPST .	EA	1				*	*	*		5	8	S6
PAHZZ	5930-548-7538	SWITCH, ROTARY PA2003 (71590)	S5 USED IN AQV-2.....	EA	2				*	*	*		5	8	S5
PAHZZ	5930-548-7538	SWITCH, ROTARY PA2003 (71590)	S6 USED IN AQV-2.....	EA	REF				*	*	*			8	S6
PAHZZ	5950-686-8049	TRANSFORMER, POWER, STEP-DOWN AND STEP-UP .. T1 USED IN AQV-1 PRIMARY 117 V, 600 CPS 1 PHASE SECONDARY 500 V, 6 V 2.250IN LG CONTINUED		EA	1				*	*	*		3	9	T1

SECTION II

TM11-6625-362-34P

(1) SMR CODE	(2) FEDERAL STOCK NUMBER	(3) DESCRIPTION REFERENCE NUMBER & MFR. CODE USABLE ON CODE		(4) UNIT OF MEAS	(5) QTY INC IN UNIT	(6) 30-DAY DS MAINT ALLOWANCE			(7) 30-DAY GS MAINT ALLOWANCE			(8) 1-YR ALW PER 100 EQUIP CNTGCT	(9) DEPOT MAINT ALW PER 100 EQUIP	(10) ILLUSTRATION		
						(a)	(b)	(c)	(a)	(b)	(c)			(a)	(b)	
						1-20	21-50	51-100	1-20	21-50	51-100			FIGURE NO.	ITEM NO.	
		CONTINUED														
PAHZZ	5950-648-6230	1456 (71590) T33REVC (78277)	T1	EA	1				*	*	*		3	9	T1	
PAHZZ	5950-709-3070	TRANSFORMER, POWER, STEP-DOWN-STEP UP USED IN AQV-2 PRIMARY 117 V 50 TO 60 CPS 1 PHASE 3.33 IN H X 2.375IN LG X 2.500 W PHC20 (80089)		EA	1				*	*	*		3	9	T2	
PAHZZ	5950-083-8303	TRANSFORMER, POWER, FIXED, AUTO-TRANSFORMER. T2 USED IN AQV-1 PRIMARY 117 V, 250 V 60 CPS SECONDARY, 50 V, 117 V, 250 V 1IN LG X 1.187IN H X 2.062IN W T29-11 (78277)		EA	1				*	*	*		3	9	T2	
PACZZ	5960-272-9182	10-040 (14663) ELECTRON TUBE V1 USED IN AQV-1 AND... AQV-2		EA	1	*	*	*	*	*	*		100	24	V1	
PACZZ	5960-188-3565	6X4WA (81349) ELECTRON TUBE V2 USED IN AQV-1 AND... AQV-2		EA	1	*	*	*	*	*	*		100	24	V2	
PAHZZ	6210-993-7388	OA3VR75 (81349) LIGHT, INDICATOR XDS1 USED IN AQV-1 AND... AQV-2 RED		EA	1				*	*	*		5	8	XDS1	
PAHZZ	6210-299-7057	812210-111 (72619) LIGHT, INDICATOR XDS2 USED IN AQV-1 AND... AQV-2 WHITE		EA	1				*	*	*		5	8	XDS2	
PAHZZ	6210-232-8166	95408-935 (72619) LIGHT, INDICATOR XDS3 USED IN AQV-1 AND... AQV-2 GREEN		EA	1				*	*	*		5	8	XDS3	
PAHZZ	6210-513-2561	81410-112 (72619) LIGHT, INDICATOR XDS4 USED IN AQV-1 AND... AQV-2 YELLOW		EA	1				*	*	*		5	8	XDS4	
PAHZZ	5920-322-8218	812210-113 (72619) FUSEHOLDER XF1 USED IN AQV-1 AND AQV-2 HJM (71400)		EA	1				*	*	*		3	8	XF1	
PAHZZ	5935-260-0516	SOCKET, ELECTRON TUBE XV1 USED IN AQV-1. AND AQV-2		EA	1				*	*	*		3	9	XV1	
PAHZZ	5935-816-0675	TS102P01 (81349) SOCKET, ELECTRON TUBE XV2 USED IN AQV-1 AND AQV-2 TYPE D LOCK-IN CONT 1/2IN H X 1-1/8IN DIA		EA	1				*	*	*		3	9	XV2	
XBHZZ		78-58 (02660) BOX ASSEMBLY NO-REF-DESIG USED IN AQV-1 WITH ATTACHMENTS		EA	1											
XBHZZ		SMD536906 (80063) BOX NO-REF-DESIG USED IN AQV-1 W/O..... ATTACHMENTS		EA	1											
XBHZZ		SMD536906-1 (80063) BRACKET NO-REF-DESIG USED IN AQV-1..... SMC536921-1 (80063)		EA	1											

SECTION II

TM11-6625-362-34P

(1) SMR CODE	(2) FEDERAL STOCK NUMBER	(3) DESCRIPTION REFERENCE NUMBER & MFR. CODE USABLE ON CODE		(4) UNIT OF MEAS	(5) QTY INC IN UNIT	(6) 30-DAY DS MAINT ALLOWANCE			(7) 30-DAY GS MAINT ALLOWANCE			(8) 1-YR ALW PER 100 EQUIP CNTGCT	(9) DEPOT MAINT ALW PER 100 EQUIP	(10) ILLUSTRATION		
						(a)	(b)	(c)	(a)	(b)	(c)			(a)	(b)	
						1-20	21-50	51-100	1-20	21-50	51-100			FIGURE NO.	ITEM NO.	
XBHZZ		BRACKET NO-REF-DESIG USED IN AQV-1 PART OF BRACKET ASSY SM-C-536922		EA	1											
XBHZZ		SMC536922-1 (80063)		EA	1											
XBHZZ		BRACKET NO-REF-DESIG USED IN AQV-1.....		EA	1											
XBHZZ		SMC536923-1 (80063)		EA	1											
XBHZZ		BRACKET NO-REF-DESIG USED IN AQV-1.....		EA	1											
XBHZZ		SMC536924-1 (80063)		EA	4											
XBHZZ		BRACKET NO-REF-DESIG USED IN AQV-1.....		EA	4											
XBHZZ		SMB536973 (80063)		EA	1											
XBHZZ		BRACKET ASSEMBLY NO-REF-DESIG USED IN..		EA	1											
XBHZZ		AQV-1														
XBHZZ		SMC536921 (80063)		EA	1											
XBHZZ		BRACKET ASSEMBLY NO-REF-DESIG USED IN..		EA	1											
XBHZZ		AQV-1														
XBHZZ		SMC536922 (80063)		EA	1											
XBHZZ		BRACKET ASSEMBLY NO-REF-DESIG USED IN..		EA	1											
XBHZZ		AQV-1														
XBHZZ		SMC536923 (80063)		EA	1											
XBHZZ		BRACKET ASSEMBLY NO-REF-DESIG USED IN..		EA	1											
XBHZZ		AQV-1														
XBHZZ		SMC536924 (80063)		EA	4	*	*	*	*	*	*		10			
PAOZZ	5340-754-2284	BUMPER,RUBBER NO-REF-DESIG USED IN AQV-		EA	4	*	*	*	*	*	*		10			
PAOZZ	5340-209-9352	1 1 IN OD														
PAOZZ	5340-209-9352	13435 (71294)		EA	4	*	*	*	*	*	*		10			
PAOZZ	5340-209-9352	BUMPER,RUBBER NO-REF-DESIG USED IN AQV-		EA	4	*	*	*	*	*	*		10			
XBHZZ		1 17/32 IN OD X 1/4 IN H														
XBHZZ		2192 (83330)		EA	1										3	
XBHZZ		CABLE ASSEMBLY NO-REF-DESIG INTERNAL...		EA	1											
XBHZZ		CABLE ASSEMBLY USED IN AQV-1 W/CONNECTOR														
XBHZZ		P3														
XBHZZ		SMB536911 (80063)		EA	1											
XBHZZ		CABLE ASSEMBLY NO-REF-DESIG USED IN....		EA	1											
XBHZZ		AQV-1 W/ATTACHMENTS P/O ADAPTER														
XBHZZ		CONNECTOR INCLUDES P4														
PAHZZ	6145-940-8128	SMB536940 (80063)		EA	1				*	*	*		5			
PAHZZ	6145-940-8128	CABLE ASSEMBLY,SPECIAL PURPOSE,ELECTRICAL		EA	1				*	*	*		10			
PAHZZ	6145-548-1266	NO-REF-DESIG USED IN AQV-1 2 FT		EA	1				*	*	*		10			
PAHZZ	6145-548-1266	8488 (70903)		EA	1				*	*	*		10			
PAHZZ	6145-548-1266	CABLE,POWER,ELECTRICAL NO-REF-DESIG USED		EA	1				*	*	*		10			
PAHZZ	6145-548-1266	IN AQV-1 AND AQV-2 (AUTHORIZED QUANTITIES							*	*	*		10			
PAHZZ	6145-548-1266	WILL BE A MINIMUM OR A MULTIPLE OF 8 FT)							*	*	*		10			
PAHZZ	6145-548-1266	CO-03MGF3-18-033*							*	*	*		10			
PAHZZ	6145-682-9937	0 (81349)		EA	1				*	*	*		10			
PAHZZ	6145-682-9937	CABLE,POWER,ELECTRICAL NO-REF-DESIG USED		EA	1				*	*	*		10			
PAHZZ	6145-682-9937	IN AQV-1 (AUTHORIZED ALLOWANCES WILL BE A							*	*	*		10			
PAHZZ	6145-682-9937	MINIMUM OR A MULTIPLE OF 2 FEET IN USE)							*	*	*		10			
PAHZZ	6145-682-9937	CO-02LGF2-18-02 *							*	*	*		10			
PAHZZ	6145-682-9937	50 (81349)		EA	1				*	*	*		10			
PAOZZ	5920-244-5150	CAP,ELECTRICAL 11 FUSEHOLDER CAP USED		EA	1	*	*	*	*	*	*		3	11	11	
PAOZZ	5920-244-5150	IN AQV-1 AND AQV-2 PLASTIC 5/8 IN LG X							*	*	*		3	11	11	
PAOZZ	5920-244-5150	11/16 IN DIA TWIST LOCK MTD							*	*	*		3	11	11	
PAOZZ	5920-244-5150	9435-1-2 (71400)							*	*	*		3	11	11	

SECTION II

TM11-6625-362-34P

(1) SMR CODE	(2) FEDERAL STOCK NUMBER	(3) DESCRIPTION REFERENCE NUMBER & MFR. CODE USABLE ON CODE	(4) UNIT OF MEAS	(5) QTY INC IN UNIT	(6) 30-DAY DS MAINT ALLOWANCE			(7) 30-DAY GS MAINT ALLOWANCE			(8) 1-YR ALW PER 100 EQUIP CNTGCT	(9) DEPOT MAINT ALW PER 100 EQUIP	(10) ILLUSTRATION	
					(a)	(b)	(c)	(a)	(b)	(c)			(a)	(b)
					1-20	21-50	51-100	1-20	21-50	51-100			FIGURE NO.	ITEM NO.
XBHHD		CASE NO-REF-DESIG USED IN AQV-1 PART OF ADAPTER CONNECTOR	EA	1										
XBHHD		SMD536939-1 (80063) CASE ASSEMBLY NO-REF-DESIG USED IN AQV-1	EA	1										
PAHZZ	5340-754-2285	SMD536905 (80063) CATCH,LUGGAGE 6 CATCH USED IN AQV-1.	EA	4				*	*	*		3	11	6
XBHHD		42 (21192) CHASSIS ASSEMBLY NO-REF-DESIG TEST SET. CHASSIS USED IN AQV-1 WITH ATTACHMENTS	EA	1									1	
XBHZZ		SMD536928 (80063) CLAMP,CABLE NO-REF-DESIG USED IN AQV-1.	EA	1										
XBHZZ		SMC536938-2 (80063) CLAMP,CABLE NO-REF-DESIG USED IN AQV-1.	EA	1										
XBHZZ		SMB536941 (ZZZZZ) CLAMP,CABLE NO-REF-DESIG USED IN AQV-1.	EA	1										
PAHZZ	5935-061-7250	SMB536979 (80063) CONNECTOR,PLUG,ELECTRICAL NO-REF-DESIG.. USED IN AQV-2 STRAIGHT SHAPE, 7/16IN LG X 1-1/4IN DIA	EA	1				*	*	*		3		
PAHZZ	5935-258-7242	8PB (71785) CONNECTOR,PLUG,ELECTRICAL NO-REF-DESIG.. USED IN AQV-2 STRAIGHT SHAPE, .828IN LG X 1.156IN DIA	EA	1				*	*	*		3		
PAHZZ	5935-083-8329	7485 (74545) CONNECTOR,PLUG CAP,ELECTRICAL NO-REF-... DESIG USED IN AQV-2	EA	1				*	*	*		3		
XBHHD		16F (71785) COVER NO-REF-DESIG USED IN AQV-1 PART OF ADAPTER CONNECTOR	EA	1										
PAHZZ	5325-826-6891	SMD536939-2 (80063) GROMMET,RUBBER NO-REF-DESIG USED IN.... AQV-1	EA	2				*	*	*		4		
PAHZZ	5325-185-0017	181 (82094) GROMMET,RUBBER NO-REF-DESIG USED IN.... AQV-1	EA	1				*	*	*		4		
XBHZZ		MS35489-33 (96906) HANDLE NO-REF-DESIG USED IN AQV-1.....	EA	1										
XBZZ		2062-3-12 (ZZZZZ) HANDLE NO-REF-DESIG USED IN AQV-1.....	EA	2										
PAOZZ	5355-792-6357	SMD536971 (80063) KNOB NO-REF-DESIG USED IN AQV-1.....	EA	1	*	*	*	*	*	*		3		
PAOZZ	5355-543-0789	PHENOLIC PRESS FIT TYPE 13/16IN LG X 1/2IN DIA X 3/64IN THK P193 (71590) KNOB NO-REF-DESIG USED IN AQV-1 AND.... AQV-2 ROUND,BLACK PHENOLIC .708IN OD X .708IN THK O/A	EA	2	*	*	*	*	*	*		3		
PAOZZ	5355-616-9604	MS91528-1N2D (96906) KNOB NO-REF-DESIG USED IN AQV-1 AND.... AQV-2 POINTER SHAPE SCREW TYPE 1.050IN LG X 0.715IN W X 0.615IN THK MS91528-1P2D (96906)	EA	5	*	*	*	*	*	*		3		

SECTION II

TM11-6625-362-34P

(1) SMR CODE	(2) FEDERAL STOCK NUMBER	(3) DESCRIPTION REFERENCE NUMBER & MFR. CODE USABLE ON CODE		(4) UNIT OF MEAS	(5) QTY INC IN UNIT	(6) 30-DAY DS MAINT ALLOWANCE			(7) 30-DAY GS MAINT ALLOWANCE			(8) 1-YR ALW PER 100 EQUIP CNTGCT	(9) DEPOT MAINT ALW PER 100 EQUIP	(10) ILLUSTRATION	
						(a)	(b)	(c)	(a)	(b)	(c)			(a)	(b)
						1-20	21-50	51-100	1-20	21-50	51-100			FIGURE NO.	ITEM NO.
PAOZZ	5355-682-6574	KNOB NO-REF-DESIG USED IN AQV-2..... SETSCREW TYPE 1.250IN DIA X 0.855IN THK MS91528-3F2D (96906)		EA	1	*	*	*	*	*	*		3		
PAOZZ	6210-270-4176	LENS,INDICATOR LIGHT 7 LENS, AMBER.. (SPACE INDICATOR) USED IN AQV-1 AND AQV-2 AMBER 81-113 (72619)		EA	1	*	*	*	*	*	*		5	11	7
PAOZZ	6210-188-8728	LENS,INDICATOR LIGHT 3 LENS, CLEAR.. (LEAK INDICATOR) USED IN AQV-1 AND AQV-2 CLEAR 95937 (72619)		EA	1	*	*	*	*	*	*		5	11	3
PAOZZ	6210-270-9924	LENS,INDICATOR LIGHT 5 LENS, GREEN.. (MARK INDICATOR) USED IN AQV-1 AND AQV-2 GREEN, SMOOTH FACE FROSTED BACK 5/8 IN LG X 3/8 IN OD, 81-112 (72619)		EA	1	*	*	*	*	*	*		5	11	5
PAOZZ	6210-247-1778	LENS,INDICATOR LIGHT 12 LENS, RED.... (PILOT INDICATOR) USED IN AQV-1 AND AQV-2 RED, SMOOTH FACE FROSTED BACK 5/8 IN LG X 3/8 IN DIA 81-111 (72619)		EA	1	*	*	*	*	*	*		5	11	12
XBHZZ		MOUNTING BASE NO-REF-DESIG USED IN AQV- 1 (BLACK) 2911-1 (ZZZZZ)		EA	2										
XBHZZ	5310-855-1249	NUT,PLAIN,HEXAGONAL NO-REF-DESIG USED.. IN AQV-1 MS35649-65 (96906)		EA	22										
XBHZZ		NUT,PLAIN,HEXAGONAL NO-REF-DESIG USED.. IN AQV-1 SMB536917-1 (80063)		EA	19										
XBHZZ		NUT,PLAIN,HEXAGONAL NO-REF-DESIG USED.. IN AQV-1 SMB536917-2 (80063)		EA	26										
PAHZZ	5310-141-1815	NUT,PLAIN,HEXAGONAL NO-REF-DESIG USED.. IN AQV-1 CL632-1 (46384)		EA	2				*	*	*		3		
PAHZZ	5310-489-5009	NUT,PLAIN,HEXAGONAL NO-REF-DESIG USED.. IN AQV-1 CL632-2 (46384)		EA	3				*	*	*		3		
PAHZZ	5310-489-5011	NUT,PLAIN,HEXAGONAL NO-REF-DESIG USED.. IN AQV-1 CL832-2 (46384)		EA	4				*	*	*		3		
PAHZZ	5330-530-1998	PACKING,PREFORMED NO-REF-DESIG USED IN.. AQV-2 AN6227887 (81352)		EA	1				*	*	*		2		
XBHHD		PANEL NO-REF-DESIG USED IN AQV-1 W/O... ATTACHMENTS SMD536914 (80063)		EA	1										
XBHHD		PANEL ASSEMBLY NO-REF-DESIG USED IN AQV- 1 WITH ATTACHMENTS SMD536913 (80063)		EA	1										
PAHZZ	5960-650-7476	POST, TOP TAINER NO-REF-DESIG USED IN... CONTINUED		EA	1				*	*	*		1		

SECTION II

TM11-6625-362-34P

(1) SMR CODE	(2) FEDERAL STOCK NUMBER	(3) DESCRIPTION REFERENCE NUMBER & MFR. CODE USABLE ON CODE		(4) UNIT OF MEAS	(5) QTY INC IN UNIT	(6) 30-DAY DS MAINT ALLOWANCE			(7) 30-DAY GS MAINT ALLOWANCE			(8) 1-YR ALW PER 100 EQUIP CNTGCT	(9) DEPOT MAINT ALW PER 100 EQUIP	(10) ILLUSTRATION		
						(a)	(b)	(c)	(a)	(b)	(c)			(a)	(b)	
						1-20	21-50	51-100	1-20	21-50	51-100			FIGURE NO.	ITEM NO.	
		CONTINUED														
PAHZZ	5310-489-5009	NUT, PLAIN, HEXAGONAL	NO-REF-DESIG USED IN	EA	3				*	*	*		3			
		75023-30 (74370)														
PAHZZ	5910-649-0114	RETAINER, CAPACITOR	NO-REF-DESIG USED IN	EA	1				*	*	*		3			
		AQV-1 1-3/8IN ID X 3/4IN H														
		17843 (14655)														
PAHZZ	5960-151-7574	RETAINER, ELECTRON TUBE	NO-REF-DESIG.....	EA	1				*	*	*		3			
		USED IN AQV-2 NAVY TYPE 49496 STEEL														
		2.467IN LG OPEN PINS X 1.206IN W X 0.890IN														
		H														
		926A (74370)														
PAHZZ	5960-808-4929	RETAINER, ELECTRON TUBE	NO-REF-DESIG.....	EA	1				*	*	*		3			
		USED IN AQV-1														
		1202A (74370)														
XBHZZ		SCREW DRIVE	NO-REF-DESIG USED IN AQV-1.	EA	4											
		MS25318-14 (96906)														
XBHZZ	5305-043-6502	SCREW, MACHINE	NO-REF-DESIG USED IN AQV-	EA	18											
		1														
		MS35221-28 (96906)														
XBHZZ		SCREW, MACHINE	NO-REF-DESIG USED IN AQV-	EA	4											
		1														
		MS35221-31 (96906)														
PAHZZ	5305-043-6639	SCREW, MACHINE	NO-REF-DESIG USED IN AQV-	EA	7				*	*	*		5			
		1														
		MS35225-14 (96906)														
XBHZZ	5305-043-6641	SCREW, MACHINE	NO-REF-DESIG USED IN AQV-	EA	8											
		1														
		MS35225-16 (96906)														
PAHZZ	5305-889-2999	SCREW, MACHINE	NO-REF-DESIG USED IN AQV-	EA	1				*	*	*		5			
		1														
		MS3225-17 (96906)														
PAHZZ	5305-984-4984	SCREW, MACHINE	NO-REF-DESIG USED IN AQV-	EA	13				*	*	*		5			
		1														
		MS35225-27 (96906)														
XBHZZ	5305-043-6663	SCREW, MACHINE	NO-REF-DESIG USED IN AQV-	EA	5											
		1														
		MS35225-28 (96906)														
PAHZZ	5305-043-6666	SCREW, MACHINE	NO-REF-DESIG USED IN AQV-	EA	2				*	*	*		5			
		1														
		MS35225-31 (96906)														
XBHZZ	5305-043-6672	SCREW, MACHINE	NO-REF-DESIG USED IN AQV-	EA	2											
		1														
		MS35225-37 (96906)														
PAHZZ	5305-043-6692	SCREW, MACHINE	NO-REF-DESIG USED IN AQV-	EA	4				*	*	*		5			
		1														
		MS35225-42 (96906)														
PAHZZ	5305-043-6695	SCREW, MACHINE	NO-REF-DESIG USED IN AQV-	EA	4				*	*	*		5			
		1														
		MS35225-45 (96906)														
XBHZZ		SCREW, MACHINE	NO-REF-DESIG USED IN AQV-	EA	2											
		1														
		MS35237-35 (96906)														

SECTION II

TM11-6625-362-34P

(1) SMR CODE	(2) FEDERAL STOCK NUMBER	(3) DESCRIPTION REFERENCE NUMBER & MFR. CODE USABLE ON CODE		(4) UNIT OF MEAS	(5) QTY INC IN UNIT	(6) 30-DAY DS MAINT ALLOWANCE			(7) 30-DAY GS MAINT ALLOWANCE			(8) 1-YR ALW PER 100 EQUIP CNTGCV	(9) DEPOT MAINT ALW PER 100 EQUIP	(10) ILLUSTRATION	
						(a)	(b)	(c)	(a)	(b)	(c)			(a)	(b)
						1-20	21-50	51-100	1-20	21-50	51-100			FIGURE NO.	ITEM NO.
PAHZZ	5305-013-3418	SCREW,MACHINE NO-REF-DESIG	USED IN A QV-1	EA	3				*	*	*		5		
PAHZZ	5305-013-3423	MS35241-34 (96906) SCREW,MACHINE NO-REF-DESIG	USED IN A QV-1	EA	3				*	*	*		5		
PAHZZ	5305-013-3427	MS35241-35 (96906) SCREW,MACHINE NO-REF-DESIG	USED IN A QV-1	EA	4				*	*	*		5		
PAHZZ	5305-013-3432	MS35241-36 (96906) SCREW,MACHINE NO-REF-DESIG	USED IN A QV-1	EA	5				*	*	*		5		
XBHZZ	5305-558-4887	MS35241-37 (96906) SCREW,MACHINE NO-REF-DESIG	USED IN A QV-1	EA	4				*	*	*				
PAHZZ	5935-187-1606	MS352265-14 (96906) SHELL NO-REF-DESIG	USED IN A QV-1.....	EA	1				*	*	*		3		
XBHZZ		3-24 (02660) SHELL,RECEPTACLE NO-REF-DESIG	USED IN A QV-1	EA	1										
PAHZZ	5960-295-7652	SM8536975 (80063) SHIELD,ELECTRON TUBE 16 TUBE SHIELD..	(SHIELDS RECTIFIER TUBE V2) USED IN A QV-1 AND A QV-2	EA	1				*	*	*		10	11	16
PAHZZ	5935-232-3758	TS102U03 (81349) SOCKET,ELECTRON TUBE NO-REF-DESIG	USED IN A QV-2	EA	1				*	*	*		3		
XBHZZ		TS102C02 (81349) STANDOFF NO-REF-DESIG	USED IN A QV-1.....	EA	4										
XBHZZ		1300-10-4-40TAP (ZZZZZ) STRAP NO-REF-DESIG	USED IN A QV-1.....	EA	2										
XBHZZ		SM8536936 (80063) TERMINAL NO-REF-DESIG	USED IN A QV-1 USE	EA	60										
XBHZZ		SM-C-536926 SMC536926 (80063) TERMINAL BOARD NO-REF-DESIG	USED IN A QV-1	EA	1										
XBHZZ		SMC536926 (80063) TERMINAL BOARD NO-REF-DESIG	USED IN A QV-1 TB1	EA	1										
XBHZZ		SMC536932 (80063) TERMINAL BOARD ASSEMBLY NO-REF-DESIG....	USED IN A QV-1 TB2 WITH ATTACHMENTS	EA	1										
XBHZZ		SM8536925 (80063) TERMINAL BOARD ASSEMBLY NO-REF-DESIG....	USED IN A QV-1 TB1 WITH ATTACHMENTS	EA	1										
XBHZZ		SMC536931 (80063) TERMINAL,LUG NO-REF-DESIG	USED IN A QV-1	EA	2										
PAHZZ	5940-156-7422	18G43 (ZZZZZ) TERMINAL,SOLDER NO-REF-DESIG	USED IN A QV-1	EA	1				*	*	*		3		
PAOZZ	5305-510-6516	147 (79963) THUMBSCREW 9 THUMBSCREW USED IN A QV-1	BRASS, NICKEL PLATED	EA	4	*	*	*	*	*	*		3	11	9
		1120-0 (ZZZZZ)													

SECTION II

TM11-6625-362-34P

(1) SMR CODE	(2) FEDERAL STOCK NUMBER	(3) DESCRIPTION REFERENCE NUMBER & MFR. CODE USABLE ON CODE		(4) UNIT OF MEAS	(5) QTY INC IN UNIT	(6) 30-DAY DS MAINT ALLOWANCE			(7) 30-DAY GS MAINT ALLOWANCE			(8) 1-YR ALW PER 100 EQUIP CNTGCT	(9) DEPOT MAINT ALW PER 100 EQUIP	(10) ILLUSTRATION		
						(a)	(b)	(c)	(a)	(b)	(c)			(a)	(b)	
						1-20	21-50	51-100	1-20	21-50	51-100			FIGURE NO.	ITEM NO.	
PAHZZ	5310-639-8164	WASHER, FLAT	NO-REF-DESIG	USED IN AQV-1.	EA	13				*	*	*		5		
		MS15795-203 (81349)														
XBHZZ	5310-194-1548	WASHER, FLAT	NO-REF-DESIG	USED IN AQV-1.	EA	10										
		MS15795-205 (81349)														
PAHZZ	5310-209-1551	WASHER, LOCK	NO-REF-DESIG	USED IN AQV-1.	EA	28				*	*	*		5		
		MS35337-21 (81349)														
PAHZZ	5310-596-7674	WASHER, LOCK	NO-REF-DESIG	USED IN AQV-1.	EA	30				*	*	*		5		
		MS35337-22 (81349)														
PAHZZ	5310-013-1182	WASHER, LOCK	NO-REF-DESIG	USED IN AQV-1.	EA	8				*	*	*		5		
		MS35337-23 (81349)														
PAHZZ	5310-198-3614	WASHER, LOCK	NO-REF-DESIG	USED IN AQV-1.	EA	22				*	*	*		5		
		MS35337-98 (81349)														

**INDEX - FEDERAL STOCK NUMBER AND REFERENCE NUMBER
CROSS-REFERENCE TO FIGURE AND ITEM NUMBER**

STOCK NUMBER	FIGURE NO.	ITEM NO.	STOCK NUMBER	FIGURE NO.	ITEM NO.
5305-013-3418			5905-299-1541	8	R28
5305-013-3423			5905-299-1541	9	R19
5305-013-3427			5905-299-2013	8	R22
5305-013-3432			5905-299-2013	9	R8
5305-043-6502			5905-299-2030	9	R12
5305-043-6639			5905-299-2030	9	R20
5305-043-6641			5905-299-2030	9	R29
5305-043-6663			5905-299-2044	8	R23
5305-043-6666			5905-299-2044	8	R24
5305-043-6672			5905-299-2044	9	R15
5305-043-6692			5905-299-2044	9	R16
5305-043-6695			5905-542-9383	9	R32
5305-510-6516	11	9	5905-552-5444	8	R14
5305-558-4887			5905-636-8609	9	R1
5305-889-2999			5905-636-8609	9	R2
5305-984-4984			5905-687-0323	8	R23
5310-013-1182			5905-687-0482	8	R22
5310-141-1815			5905-752-3352	9	R31
5310-194-1548			5905-816-2252	8	R17
5310-198-3614			5905-926-0380	8	R25
5310-209-1551			5905-926-0381	8	R27
5310-489-5009			5905-926-0407	9	R18
5310-489-5011			5905-926-0407	9	R19
5310-596-7674			5905-926-0499	8	R26
5310-639-8164			5905-988-2314	8	R35
5310-855-1249			5905-989-5564	8	R14
5325-185-0017			5905-993-8879	8	R21
5325-826-6891			5910-084-7744	9	C3
5330-530-1998			5910-086-6946	1-1	C1
5340-209-9352			5910-649-0114		
5340-754-2284			5910-667-5230	9	C2
5340-754-2285	11	6	5910-709-3064	9	C1
5355-543-0789			5910-721-1782	9	C3
5355-616-9604			5910-816-1853	8	C4
5355-682-6574			5920-244-5150	11	11
5355-792-6357			5920-280-8342	24	F1
5905-061-7281	8	R30	5920-322-8218	8	XF1
5905-061-7282	9	R9	5930-240-0273	8	S3
5905-061-8161	9	R12	5930-548-7538	8	S5
5905-061-8166	9	R15	5930-548-7538	8	S6
5905-061-8166	9	R16	5930-655-1507	8	S1
5905-190-8865	8	R21	5930-655-1575	8	S6
5905-190-8867	9	R7	5930-709-3068	8	S2
5905-190-8867	9	R32	5930-709-3068	8	S4
5905-190-8873	9	R4	5930-721-0037	8	S5
5905-190-8876	8	R33	5930-721-0038	8	S1
5905-190-8876	8	R34	5930-729-0930	8	S4
5905-201-2950	8	R28	5935-061-7250		
5905-249-3656	8	R30	5935-061-8211	23	J5
5935-249-3656	8	R33	5935-083-8329		
5905-253-1233	9	R6	5935-187-0727	10	P3
5905-253-1233	9	R7	5935-187-0727	24	P2
5905-256-0390	9	R13	5935-187-1606		
5905-256-0390	9	R18	5935-232-3758		
5905-256-0390	9	R29	5935-243-6771	24	P4
5905-257-0937	9	R3	5935-258-1021	9	J2
5905-258-7070	8	R10	5935-258-1021	10	J1
5905-258-7070	8	R17	5935-258-7242		
5905-258-7070	9	R26	5935-258-9000	10	P3
5905-259-2648	8	R24	5935-258-9000	24	P2
5905-270-5815	9	R1	5935-260-0516	9	
5905-270-5815	9	R2	5935-260-0517	8	J3
5905-279-1722	8	R25	5935-260-0517	23	J4
5905-279-1722	8	R27	5935-615-2420	9	J2
5905-279-1722	8	R34	5935-615-2420	10	J1
5905-279-1722	8	R35	5935-636-7145	24	P1
5905-279-1722	9	R9	5935-816-0675	9	XV2
5905-279-1722	9	R11	5940-156-7422		
5905-279-2019	9	R5	5940-577-3695	8	E2
5935-279-2019	9	R31	5940-577-3695	8	E4
5905-279-2543	9	R3	5940-577-3696	8	E1
5905-279-2543	9	R6	5940-577-3696	8	E3
5905-279-4302	8	R17	5950-083-8303	9	T2
5905-279-4302	9	R4	5950-648-6230	9	T1
5905-279-4302	9	R5	5950-686-8049	9	T1
5905-279-4302	9	R8	5950-709-3070	9	T2
5905-279-4302	9	R11	5960-151-7574		

SECTION IV

TM11-6625-362-34P

STOCK NUMBER	FIGURE NO.	ITEM NO.	STOCK NUMBER	FIGURE NO.	ITEM NO.
5960-188-3565	24	V2	6210-270-9924	11	5
5960-272-9182	24	V1	6210-299-7057	8	XDS2
5960-295-7652	11	16	6210-513-2561	8	XDS4
5960-650-7476			6210-993-7388	8	XDS1
5960-808-4929			6240-155-8706	11	DS1
6145-548-1266			6240-155-8706	11	DS3
6145-682-9937			6240-155-8706	11	DS4
6145-940-8128			6240-223-9100	11	DS2
6210-188-8728	11	3	6625-061-8120	8	M1
6210-232-8166	8	XDS3	6625-838-4928	8	M1
6210-247-1778	11	12	6625-838-4929	9	M2
6210-270-4176	11	7	6625-889-1568	8	M2

REFERENCE NO.	MFR CODE	FIG. NO.	ITEM NO.	REFERENCE NO.	MFR CODE	FIG. NO.	ITEM NO.
AN6227887	81352			RC20GF151J	81349	8	R28
A57	78277	8	M1	RC20GF151J	81349	9	R19
A58	78277	8	M2	RC20GF153K	81349	8	R33
CL632-1	46384			RC20GF153K	81349	8	R34
CL632-2	46384			RC20GF274J	81349	8	R21
CL832-2	46384			RC20GF512J	81349	9	R5
CP1-2	00656	8	R24	RC20GF512J	81349	9	R31
CU5021	44655	8	R10	RC20GF623J	81349	8	R30
CU5021	44655	8	R17	RC20GF623J	81349	8	R33
CU5021	44655	8	R26	RC32GF102K	81349	8	R25
CU5031	44655	8	R28	RC32GF102K	81349	8	R27
CO-02LGF2-18-02 50	81349			RC32GF102K	81349	8	R34
CO-03MGF3-18-0330	81349			RC32GF102K	81349	8	R35
C3767	81349	24	P1	RC32GF102K	81349	9	R9
ETB100	14655	9	C3	RC32GF102K	81349	9	R11
F02A250VA	81349	24	F1	RC32GF123J	81349	9	R12
HJM	71400	8	XF1	RC32GF123J	81349	9	R20
MS15571-2	96906	11	DS1	RC32GF123J	81349	9	R29
MS15571-2	96906	11	DS2	RC32GF222K	81349	8	R23
MS15571-2	96906	11	DS4	RC32GF222K	81349	8	R24
MS15795-203	81349			RC32GF222K	81349	9	R15
MS15795-205	81349			RC32GF222K	81349	9	R16
MS25100-22	81349	8	S1	RC32GF274J	81349	8	R10
MS25318-14	96906			RC32GF274J	81349	9	R4
MS3225-17	96906			RC32GF274J	81349	9	R5
MS35059-22	96906	8	S6	RC32GF274J	81349	9	R8
MS35221-28	96906			RC32GF274J	81349	9	R11
MS35221-31	96906			RC32GF363J	81349	9	R3
MS35225-14	96906			RC32GF363J	81349	9	R6
MS35225-16	96906			RC32GF473J	81349	8	R22
MS35225-27	96906			RC32GF473J	81349	9	R8
MS35225-28	96906			RC42GF472J	81349	9	R3
MS35225-31	96906			RC42GF473J	81349	9	R4
MS35225-37	96906			RC42GF512J	81349	9	R7
MS35225-42	96906			RC42GF512J	81349	9	R32
MS35225-45	96906			RC42GF561J	81349	9	R6
MS352265-14	96906			RC42GF561J	81349	9	R7
MS35237-35	96906			RC42GF681J	81349	9	R13
MS35241-34	96906			RC42GF681J	81349	9	R18
MS35241-35	96906			RC42GF681J	81349	9	R29
MS35241-36	96906			RN60D10R4F	81349	8	R27
MS35241-37	96906			RN60D2000F	81349	8	R35
MS35337-21	81349			RN60D50R0F	81349	8	R26
MS35337-22	81349			RN60D66R7F	81349	8	R25
MS35337-23	81349			RN65D2702F	81349	8	R14
MS35337-98	81349			RN70B1001F	81349	8	R14
MS35489-33	96906			RN70B2000F	81349	9	R32
MS35649-65	96906			RN70B22R2F	81349	8	R30
MS91528-1N2D	96906			RN70B2702F	75042	8	R21
MS91528-1P2D	96906			RN70B3501F	23237	9	R15
MS91528-3F2D	96906			RN70B3501F	23237	9	R16
NE51	82047	11	DS2	RN70B66R7F	81349	9	R9
NP3014A	37942	9	C3	RN70C1330F	81349	9	R31
PA2003	71590	8	S5	RN70F3501D	81349	9	R18
PA2003	71590	8	S6	RN70F3501D	81349	9	R19
PHC20	80089	9	T1	RW31V252	81349	9	R1
PM255	14655	8	C4	RW31V252	81349	9	R2
PNAFH2-40	00656	1-1	C1	RW55G252	81349	9	R1
P123ZP	00656	9	C2	RW55G252	81349	9	R2
P193	71590			SMB536911	80063	3	
P37REVB	78277	8	R22	SMB536917-1	80063		
P38REVC	72877	8	R23	SMB536917-2	80063		

SECTION IV

TM11-6625-362-34P

REFERENCE NO.	MFR CODE	FIG. NO.	ITEM NO.	REFERENCE NO.	MFR CODE	FIG. NO.	ITEM NO.
SMB536925	80063				71590	8	S3
SMB536936	80063				79963		
SMB536940	80063				71785		
SMB536941	ZZZZZ				14655		
SMB536973	80063				64959	23	J5
SMB536975	80063				ZZZZZ		
SMB536979	80063				82094		
SMC536921	80063				71590	8	S4
SMC536921-1	80063				ZZZZZ		
SMC536922	80063				83330		
SMC536922-1	80063				81073	8	E2
SMC536923	80063				81073	8	F4
SMC536923-1	80063				81073	8	E1
SMC536924	80063				81073	8	E3
SMC536924-1	80063				ZZZZZ		
SMC536926	80063				02660		
SMC536931	80063				01914	8	M1
SMC536932	80063				01914	8	M2
SMC536938-2	80063				21192	11	6
SMD536905	80063				12697	8	R17
SMD536906	80063				12697	9	R12
SMD536906-1	80063				81349	24	V1
SMD536913	80063				74545	10	P3
SMD536914	80063				74545	24	P2
SMD536928	80063				74545	9	J2
SMD536939-1	80063	1			74545	10	J1
SMD536939-2	80063				74545	10	P3
SMD536971	80063				74545	24	P2
TS101P01	81349	8	J3		74545		
TS101P01	81349	23	J4		74545	9	J2
TS102C02	81349				74545	10	J1
TS102P01	81349	9	XV1		74370		
TS102U03	81349	11	16		02660	9	XV2
T29-11	78277	9	T2		71785		
T33REVC	78277	9	T1		72619	11	12
UP5335	14655	9	C1		72619	11	5
0A3VR75	81349	24	V2		72619	11	7
10-040	14663	9	T2		72619	8	XDS1
1120-0	ZZZZZ	11	9		72619	8	XDS4
1202A	74370				72619	8	XDS3
1300-10-4-40TAP	ZZZZZ				70903		
13435	71294				02660	24	P4
1404	71590	8	S2		74370		
1404	71590	8	S4		71400	11	11
1415	71590	8	S5		72619	8	XDS2
1431	71590	8	S1		72619	11	3

By Order of the Secretary of the Army:

CREIGHTON W. ABRAMS
General, United States Army
Chief of Staff

Official:

VERNE L. BOWERS
Major General, United States Army
The Adjutant General

Distribution:

Active Army:

USASA (2)
CNGB—(1)
ACSC-E (2)
USAARENBD (2)
USAMB (10)
USACDC (2)
USACDC Agcy (1)
AMC (1)
CONARC (5)
ARADCOM (2)
ARADCOM Rgn (2)
OS Maj Comd (4)
LOGCOMD (5)
MICOM (2)
TECOM (2)
USASTRATCOM (4)
HISA (ECOM) (70)
MDW (1)
Armies (2)
Corps (2)
Svc Colleges (2)
USASESS (5)
USAADS
USAFAS (2)
USAA RMS (2)
USAIS (2)
USAES (2)

USAINTS (3)
WRAMC (1)
USACDCEC (5)
Instl (2) except
Fort Gordon (10)
Fort Huachuca (10)
Fort Carson (10)
WSMR (2)
Army Dep (2) except
LBAD (14)
SAAD (30)
TOAD (14)
LEAD (7)
ATAD (10)
USA Dep (2)
Sig Sec USA Dep (2)
Sig Dep (5)
Sig FLDMS (1)
USAERDAA (2)
USAERDAW (2)
MAAG (1)
USARMIS (1)
Ft Richardson (ECOM Ofc) (2)
Units org under fol TOE:
(1-copy each)
11-158
29-134
29-136

NG: None

USAR: None

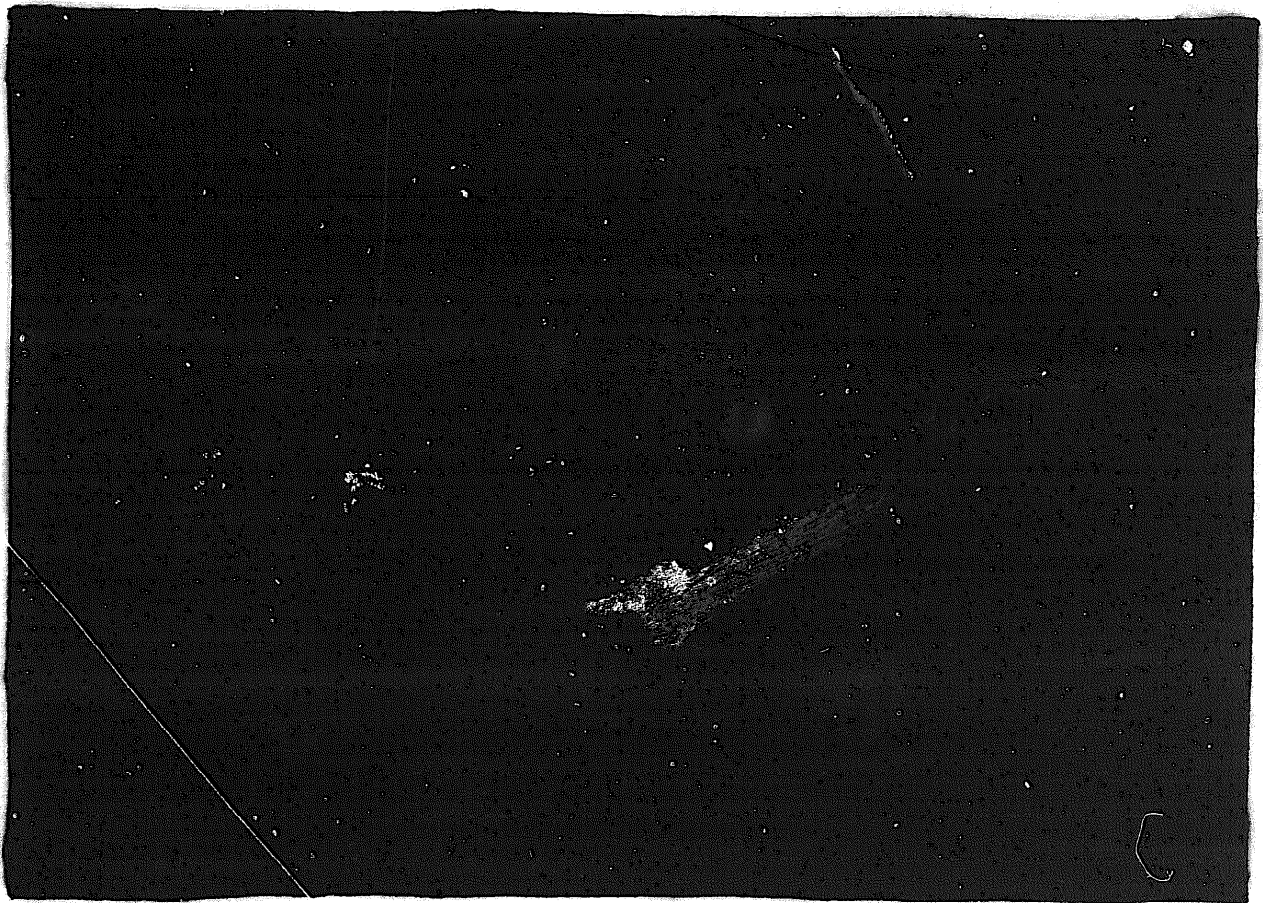
For explanation of abbreviations used, see AR 310-50.

END

7-25-83

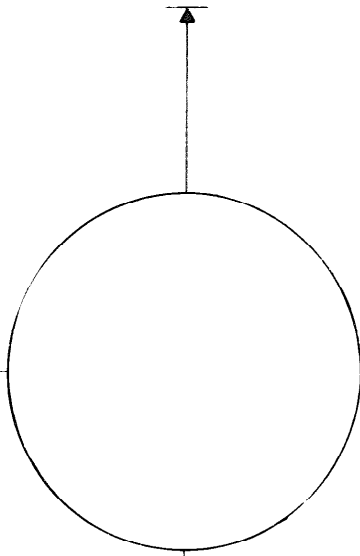
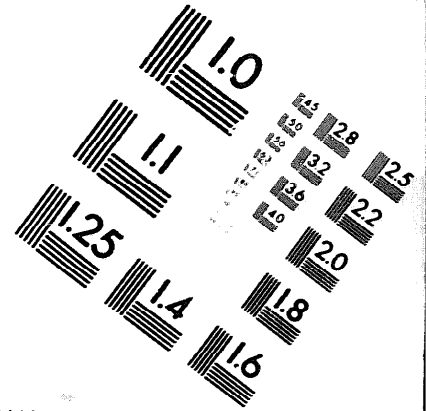
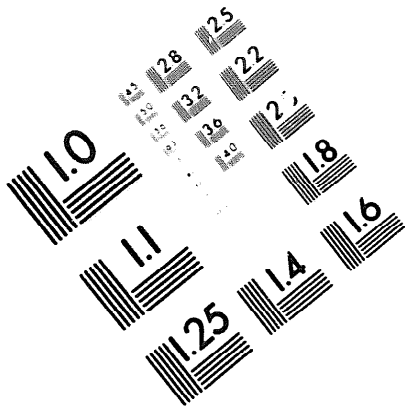
DATE





DEPARTMENT OF THE ARMY

MICROFORM
TEST TARGET



150 MM

1.0 mm (e= 0.1 mm)

ABCDEFGHIJKLMN OPQRSTUVWXYZ 1234567890
abcdefghijklmnopqrstuvwxyz \$c£ / % # 1/2 1/4 3/4 — = + x & @ *

1.5 mm (e= 1.09 mm)

ABCDEFGHIJKLMN OPQRSTUVWXYZ 1234567890
abcdefghijklmnopqrstuvwxyz \$c£ / % # 1/2 1/4 3/4 — = + x & @ *

2.0 mm (e= 1.37 mm)

ABCDEFGHIJKLMN OPQRSTUVWXYZ
abcdefghijklmnopqrstuvwxyz
1234567890 \$c£ / % # 1/2 1/4 3/4 — = + x & @ *

2.5 mm (e= 1.77 mm)

ABCDEFGHIJKLMN OPQRSTUVWXYZ
abcdefghijklmnopqrstuvwxyz
1234567890 \$c£ / % # 1/2 1/4 3/4 — = + x & @ *

1.0 mm (e= 0.1 mm)

ABCDEFGHIJKLMN OPQRSTUVWXYZ 1234567890
abcdefghijklmnopqrstuvwxyz \$c£ / % # 1/2 1/4 3/4 — = + x & @ *

1.5 mm (e= 1.09 mm)

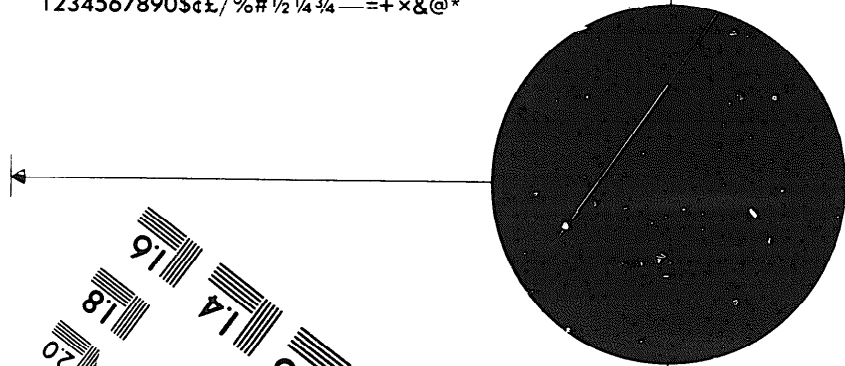
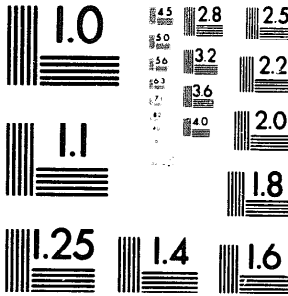
ABCDEFGHIJKLMN OPQRSTUVWXYZ 1234567890
abcdefghijklmnopqrstuvwxyz \$c£ / % # 1/2 1/4 3/4 — = + x & @ *

2.0 mm (e= 1.37 mm)

ABCDEFGHIJKLMN OPQRSTUVWXYZ
abcdefghijklmnopqrstuvwxyz
1234567890 \$c£ / % # 1/2 1/4 3/4 — = + x & @ *

2.5 mm (e= 1.77 mm)

ABCDEFGHIJKLMN OPQRSTUVWXYZ
abcdefghijklmnopqrstuvwxyz
1234567890 \$c£ / % # 1/2 1/4 3/4 — = + x & @ *



200 MM

250 MM

